

[www.datacenter.rdm.com](http://www.datacenter.rdm.com)

Data Center

**Headquarters**

Reichle & De-Massari AG  
Binzstrasse 31  
CHE-8620 Wetzikon, Switzerland  
Telephone +41 (0)44 933 81 11  
Telefax +41 (0)44 930 49 41

[www.rdm.com](http://www.rdm.com)

**R&M partners in your area**

Australia  
Austria  
Belgium  
Bulgaria  
Czech Republic  
China  
Denmark  
Egypt  
France  
Finland  
Germany  
Great Britain  
Hungary  
India  
Italy  
Japan  
Jordan  
Kingdom of Saudi Arabia  
Korea  
Netherlands  
Norway  
Poland  
Portugal  
Romania  
Russia  
Singapore  
Spain  
Sweden  
Switzerland  
United Arab Emirates

R318337/3.0e/07.11/DZS Printed in Switzerland – © Reichle & De-Massari AG – All rights reserved



Convincing cabling solutions



With the top-quality modular cabling solutions from R&M, you make your data center substantially more flexible and efficient.

Pre-terminated and tested components and solutions substantially reduce the cost of and effort involved in installing, maintaining and expanding your infrastructure.

R&M data center solutions provide you with the security, reliability and flexibility you need in operations and help you carry out your future plans.

Get more:

Increased efficiency

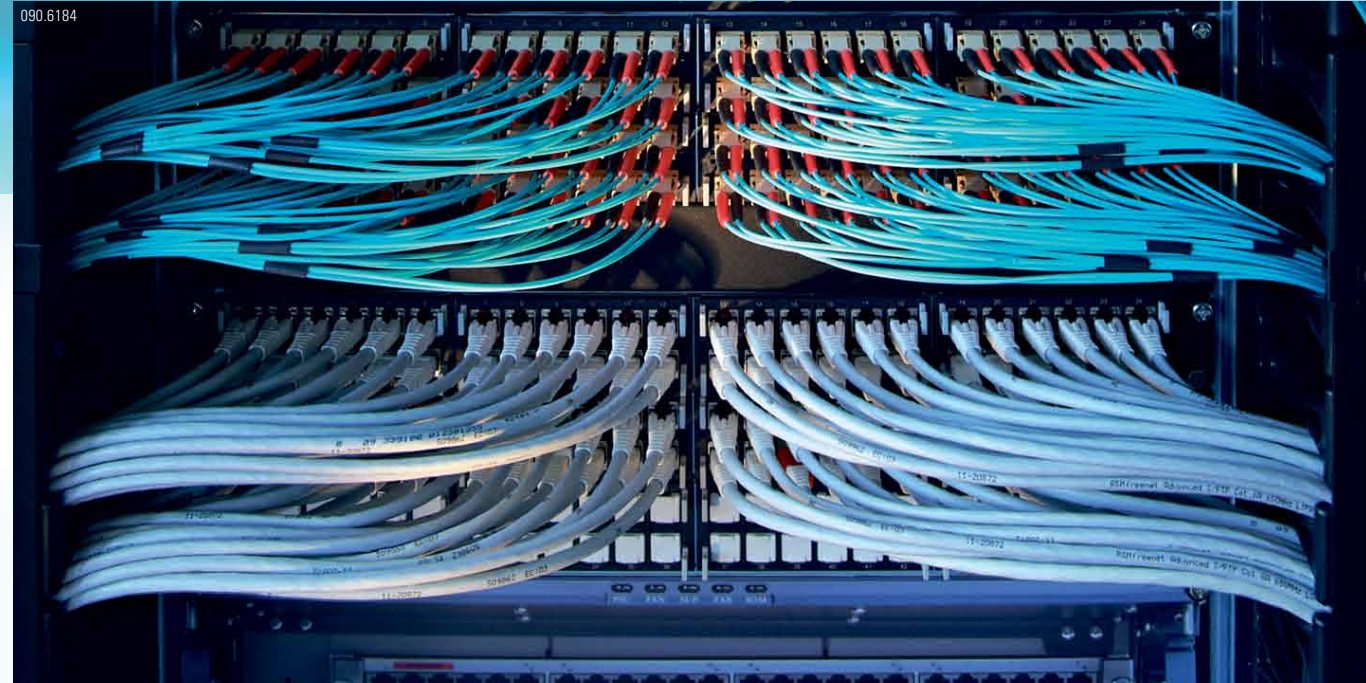
Maximum flexibility

Maximum availability

Simplest installation

Effortless expansion

Sound and lasting investment



## Flexibility for your data center

### Responding flexibly to every requirement

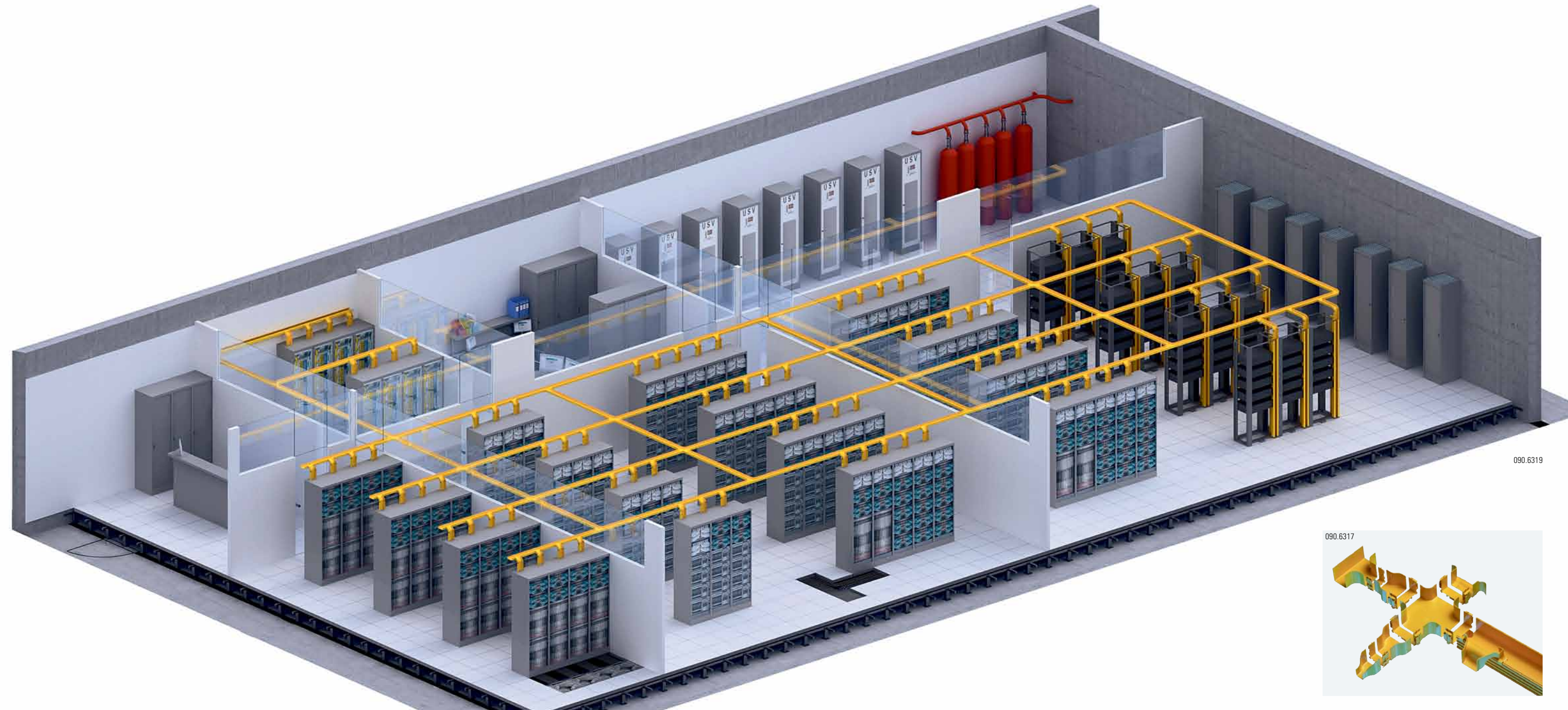
Applications such as cloud computing, cloud services and social media cause data volumes to skyrocket. Operators need ever more complex data centers with ever greater capacities to handle this situation. They are called on to implement constantly changing requirements efficiently despite mounting cost pressures. At the same time, planning and implementation cycles are becoming shorter and shorter, demanding a maximum in flexibility. Data center operators need profitable solutions that ensure maximum availability, suitability for consolidation and expansion, and maximum energy efficiency.

### More efficiency and flexibility

Flexibility and efficiency in installation, operation and maintenance are therefore crucial factors in the differentiation of data centers from each other. This agility is based on a structured cabling solution that is neutral in terms of application and in compliance with the relevant industry standards. R&M is market and technology leader in high-quality, modular cabling systems for copper and fiber optics. Our components and solutions have been proving their mettle for years in daily service in data centers around the globe.

### Solutions for the toughest demands

Cabling solutions from R&M meet the toughest demands on transmission quality, security and stability. Installation times are much shorter thanks to consistently modular design and fast installation technology. Move, add and change (MAC) requirements can be handled flexibly and efficiently. Operators can effortlessly carry out even complex migrations with individually pre-terminated and tested cabling links or application-ready distribution cabinets. R&M competently assists data centers with everything from design and installation to expansion and operation in addition to offering qualified on-site support.



### R&Mfreenet – Warranty Program

- Long-term system and application warranties genuinely protect your investments
- Certified R&M partner network for competent planning and installation
- Maximum operational reliability and availability thanks to globally uniform installation standards



### High-density MPO/MTP® system

- Cabling systems for seamless migration from 10 Gbit/s to 40/100 Gbit/s
- Pre-terminated and factory-tested plug & play solutions for maximum quality
- MPO/MTP® connectors for reliable, fast and compact installations



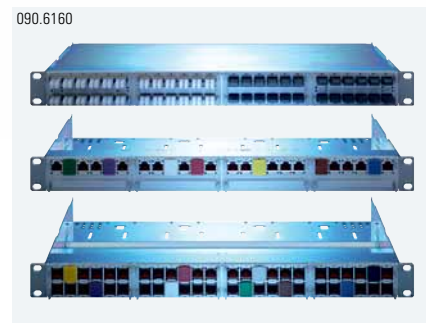
### Efficient use of space

- More available space in the rack thanks to innovative R&M Raised Floor System
- Higher productivity and performance density in existing areas
- Fast installation and maintenance combined with simple, reliable handling



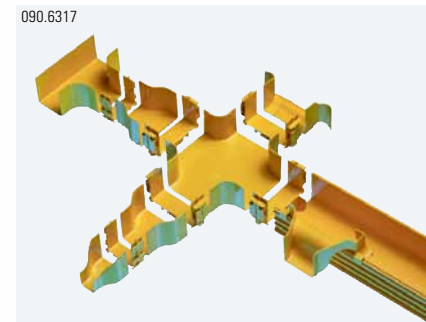
### Plug & play systems

- Individually pre-terminated and tested cabling systems for copper and fiber optics
- Efficient, error-free installation for increased reliability in installation
- Significant reduction in installation times



### Maximum packing density

- Modularly designed panel offering maximum flexibility for copper and fiber optics
- More space for active components in the distribution cabinet thanks to its 48 ports per unit
- Complete scalability from 10 Gbit/s to 40/100 Gbit/s applications



### Cable management

- Intuitive cable management for efficient work processes and maximum flexibility
- Simple handling thanks to end-to-end system requiring no tools
- All move, add and change requirements require no effort at all



## Decisive benefits for your data center

R&M is your independent partner for high-quality cabling solutions with cutting-edge technology from a single source.

### ✓ Increased efficiency in planning, installation and operation

With the modular cabling solutions from R&M, operators can plan systems quickly and easily and put them into operation without a hitch. These top-quality systems incorporate the latest technology and comply with standards for guaranteed reliability and performance with each connection. Pre-terminated copper and fiber-optic cables with fast-installation technology and convenient handling reduce installation work substantially.

### ✓ Maximum availability

The high quality standards of R&M ensure reliable, uninterrupted operation to satisfy the highest service levels. New transmission technologies maximize performance. All components and solutions are thoroughly tested and examined before delivery. The innovative safety system prevents people from tampering with the network.

### ✓ IMAC (installation, move, add, change) has never been easier

End-to-end modularity simplifies planning, installation and operation. With pre-terminated copper and fiber-optic cable, operators can maintain and expand their systems with the greatest of ease. Thanks to the forward-looking MPO/MTP® portfolio, migration from 10 Gbit/s to 40/100 Gbit/s is absolutely trouble-free. Solutions for patch man-

agement and cable management as well as a clear, consistent labeling concept further simplify maintenance and administration.

### ✓ Genuinely sound investment

With the structured cabling concept from R&M, you can set up the infrastructure independent of the architecture and it remains scalable and migratable. R&M quality management ensures the most stringent standards in product quality. The installations are executed by certified planners and installers from the Qualified Partner Program (QPP). The system warranty means long-term protection of each investment in a solution from R&M.

### ✓ R&M Green Initiative

R&M solutions increase energy efficiency in data centers. All components are modular to allow optimum reuse. This approach helps to reduce the amount of material utilized. R&M insists on environmentally-friendly manufacturing processes that minimize the waste rate, recycle materials and save energy. In production, R&M uses materials that are compatible with the environment and international environmental directives (e.g. RoHS/WEEE/REACH).

For more information, please visit our website: [www.datacenter.rdm.com](http://www.datacenter.rdm.com)