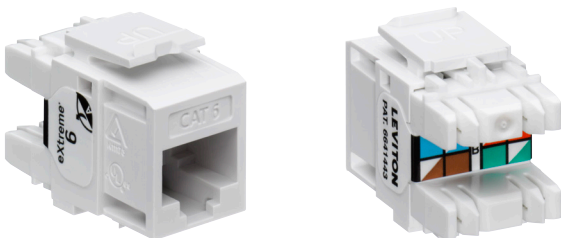


eXtreme® Cat 6 Component-Rated UTP QuickPort® Jack

APPLICATION

The eXtreme Cat 6 jack is designed to be used with all QuickPort compatible products. The jack includes patented Retention Force Technology™ which promotes consistent performance over the life of the system. It features unique pair separation towers allowing for quicker and easier terminations. The jack is built on a 180-degree configuration with the punch field in the back, allowing for rear termination.



SPECIFICATION

The jack shall meet or exceed the requirements for channel- and component-level performance as described in ANSI/TIA-568.2-D Category 6 standards, as well as the Class E requirements described in ISO/IEC 11801-1. The jack shall also be in compliance with all National Electrical Codes; compliant with ANSI/TIA-1096-A; UL listed; and independently verified. In addition to Category 6 compliance, the jack shall have the ability to support high-megabit and shared-sheath applications. All plastics used in construction of the jack bodies shall be fire retardant with a UL flammability rating of 94V-0. Termination of all jacks shall be 110-type insulation displacement connectors (IDC). The jack shall provide a ledge directly adjacent to the 110-style termination against which the wires can be terminated and cut in one action by the installation craftsperson. Jack wiring is universal and will accommodate installation color codes for T568A and T568B wiring schemes. The jack shall be individual snap-in style and the termination field shall be in the rear for easy access. The jack shall include a snap on dust cap with high pull-out force and shall fit in a variety of telecommunications wallplates, outlets, and field-configurable patch panels and patch blocks.

COUNTRY OF ORIGIN

USA

FEATURES

- Terminates 26 to 22-gauge solid conductors and 24 to 22-gauge stranded conductors
- Terminates 26-gauge stranded conductors up to 5 times
- Capable of multiple re-terminations
- Gas-tight IDC jacks prevent corrosion
- Dual-layer T568B/T568A wiring label simplifies punchdown
- Patented Retention Force Technology protects tines from damage and increases system longevity
- Pair Separation Tower design facilitates separation of conductors and minimizes untwisting
- 180-degree configuration allows for rear termination
- Available in 13 ANSI/TIA-606-C compatible colors for color coding or organization
- Available individually, in bulk packages of 25, and in bulk packages of 150 with a JackRapid™ Punchdown Tool

DESIGN CONSIDERATIONS

- Use in any QuickPort housing to support eXtreme Cat 6 UTP connectivity in surface-mount, flush-mount, or modular furniture outlets and field-configurable panels
- Can be used in conjunction with other QuickPort snap-in modules for voice/data and video applications over UTP, coax, and fiber

STANDARDS COMPLIANCE

- ANSI/TIA-568.2-D (Cat 6)
- ISO/IEC 11801-1 (Class E)
- ANSI/TIA-1096-A (formerly FCC Part 68)
- cULus Listed
- PoE standards: IEEE 802.3af, 802.3at, 802.3bt, Cisco UPoE, and Power over HDBaseT™ (PoH) up to 100 watts
- UL 2043 Plenum Certified

PHYSICAL SPECIFICATIONS

Dimensions: See page two
 Materials: **Connector Body:** High-impact, fire-retardant plastic rated UL 94V-0.
Spring-Wire Contacts: High-quality copper-based alloy, plated with 50 micro-inches of gold over 100 micro-inches of nickel for lowest contact resistance, maximum life.

Environmental Conditions: **Storage Temperature:** -40 °C to +70 °C
Operating Temperature: -10 °C to +60 °C

Leviton Network Solutions

2222 - 222nd St. SE
Bothell, WA 98021-4416

tel 1-800-824-3005
tel +1-425-486-2222
appeng@leviton.com
www.leviton.com

Asia / Pacific
T +1.631.812.6228
E infoasean@leviton.com

Europe
T +44.0.1592.772124
E customerserviceeu@leviton.com

Canada
T +1.514.954.1840
E pcservice@leviton.com

Mexico
T +52.55.5082.1040
E lsamarketing@leviton.com

Caribbean
T +1.954.593.1896
E infocaribbean@leviton.com

Middle East & Africa
T +971.4.247.9800
E lmeinfo@leviton.com

China
T +852.2774.9876
E infochina@leviton.com

South Korea
T +82.2.3273.9963
E infokorea@leviton.com

Colombia
T +57.1.743.6045
E infocolombia@leviton.com

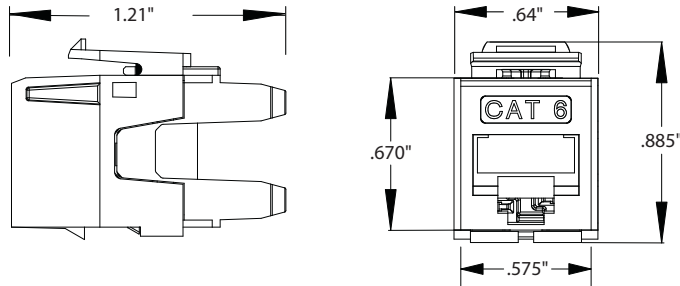
WARRANTY INFORMATION

Limited product and limited extended warranties are rendered VOID if the installed structured cabling system is used for Power over Ethernet applications that exceed the product's specified power rating.

For a copy of Leviton product warranties, visit www.leviton.com/warranty.

ELECTRONIC FILES

For CAD files, typical specs, or technical drawings (.DXF, .DWG), visit www.leviton.com.



61110-xx6

PART NUMBERS

| Description | Jack | QuickPack® 25/Bag | 150/Bag with JackRapid™ Tool |
|--|-----------|----------------------|---------------------------------|
| eXtreme® Cat 6 Component-Rated UTP QuickPort® Jack, white | 61110-RW6 | 61110-BW6 | 61110-JW6 |
| eXtreme Cat 6 Component-Rated UTP QuickPort Jack, ivory | 61110-RI6 | 61110-BI6 | 61110-JI6 |
| eXtreme Cat 6 Component-Rated UTP QuickPort Jack, orange | 61110-RO6 | 61110-BO6 | 61110-JO6 |
| eXtreme Cat 6 Component-Rated UTP QuickPort Jack, blue | 61110-RL6 | 61110-BL6 | 61110-JL6 |
| eXtreme Cat 6 Component-Rated UTP QuickPort Jack, black | 61110-RE6 | 61110-BE6 | 61110-JE6 |
| eXtreme Cat 6 Component-Rated UTP QuickPort Jack, light almond | 61110-RT6 | 61110-BT6 | 61110-JT6 |
| eXtreme Cat 6 Component-Rated UTP QuickPort Jack, gray | 61110-RG6 | 61110-BG6 | 61110-JG6 |
| eXtreme Cat 6 Component-Rated UTP QuickPort Jack, crimson red | 61110-RC6 | 61110-BC6 | 61110-JC6 |
| eXtreme Cat 6 Component-Rated UTP QuickPort Jack, yellow | 61110-RY6 | 61110-BY6 | 61110-JY6 |
| eXtreme Cat 6 Component-Rated UTP QuickPort Jack, green | 61110-RV6 | 61110-BV6 | 61110-JV6 |
| eXtreme Cat 6 Component-Rated UTP QuickPort Jack, purple | 61110-RP6 | 61110-BP6 | 61110-JP6 |
| eXtreme Cat 6 Component-Rated UTP QuickPort Jack, brown | 61110-RB6 | 61110-BB6 | 61110-JB6 |
| eXtreme Cat 6 Component-Rated UTP QuickPort Jack, dark red | 61110-RR6 | 61110-BR6 | 61110-JR6 |



| | | | | | |
|---|--|---|--|---|---|
| Leviton Network Solutions 2222 - 222nd St. SE Bothell, WA 98021-4416 | Asia / Pacific T +1.631.812.6228 E infoasean@leviton.com | Canada T +1.514.954.1840 E pcservice@leviton.com | Caribbean T +1.954.593.1896 E infocaribbean@leviton.com | China T +852.2774.9876 E infochina@leviton.com | Colombia T +57.1.743.6045 E infocolombia@leviton.com |
| tel 1-800-824-3005 tel +1-425-486-2222 appeng@leviton.com www.leviton.com | Europe T +44.0.1592.772124 E customerserviceeu@leviton.com | Mexico T +52.55.5082.1040 E lsmarketing@leviton.com | Middle East & Africa T +971.4.247.9800 E lmeinfo@leviton.com | South Korea T +82.2.3273.9963 E infokorea@leviton.com | |

Cat6Plus 1RU 24-Port Patch Panel

Datasheet: GD035533v13



APPLICATION

Cat6Plus 19" rack mounted patch panels offer true Category 6 component performance using a patented contact pin array design. All panels are backward compatible. In addition to this, each panel has been designed with a cable management/strain relief feature built in to the rear. All outlets are numerically identified with an additional writable surface for ease of port naming. Each panel is supplied with cable ties, panel mounting accessories, and short form installation instruction.

FEATURES

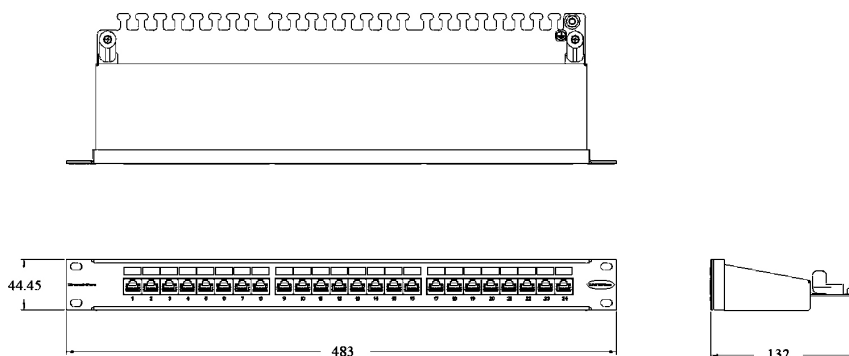
- Category 6 performance
- Shielded and Unshielded versions available
- Colors: Black or Gray
- Cable management on rear
- Individual port identification
- Backward compatible
- Patented pin array
- Individual port screening



ORDER INFO

| Part Number | Item Description | Color | Weight per Item (nom) | Qty per Pack |
|---------------|--|-------|-----------------------|--------------|
| C6CPNLF240K2M | Cat6Plus 1RU 24-Port Shielded Panel, LSA Style | Black | 1 Kg | 1 |
| C6CPNLF240K8M | Cat6Plus 1RU 24-Port Shielded Panel, LSA Style | Gray | 1 Kg | 1 |
| C6CPNLU240K2M | Cat6Plus 1RU 24-Port Unshielded Panel, LSA Style | Black | 0.75Kg | 1 |
| C6CPNLU24012M | Cat6Plus 1RU 24-Port Unshielded Panel, 110 Style | Black | 0.75Kg | 1 |

PHYSICAL CHARACTERISTICS



MATERIALS

- Chassis – Powder Coated Steel
- Phosphor Bronze Contact Pins - Nickel Plated with selective gold plating (50 micro inch min) over contact area
- PBT UL94 V-0

STANDARDS

- Applicable Standards: Category 6 compliant to ISO IEC11801 & amendments, EN50173-1, ANSI/EIA/TIA 568C Series

ENVIRONMENTAL CONDITIONS

- Operating temperature from -10°C to 60°C at 93% relative humidity, non-condensing
- Storage temperature from -40°C to 70°C

CONFORMANCE

- Independently tested and verified to recommended IEC 60603-7, 7-1, 7-51 series of standards. The jack conforms to 'over stress' testing up to 2500 insertion cycles with a standard plug

INSTALLATION

- IDC Contacts: 110 or LSA style Insulation Displacement Connectors
- Additional Info: Each carton contains full installation instructions. Easy to follow color coding for both T568A and T568B wiring standard termination.

*"Leviton is **dedicated to designing, developing, and manufacturing** sustainable **high performance** structured cabling and specialty **cabling solutions**."*

The information contained in this document is valid and correct at the time of issue. Leviton reserves the right to modify details without notice in light of subsequent standard/specification changes and ongoing technical developments.

Cat6Plus Unshielded Patch Cord

Datasheet: GD032301v18



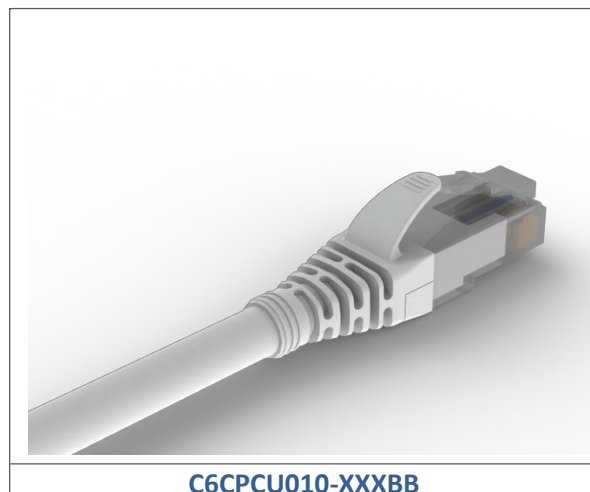
APPLICATION

Leviton Cat6Plus Patch Cords enable you to get the optimum performance from your cabling system. Our factory made and tested patch cords offer you guaranteed quality and ensure that your system avoids the performance degradation which inferior alternatives will give you at high data rates.

The Cat6Plus system is classified as Category 6 (Class E) product set that is fully backward compatible to Cat 5e (Class D) products.

FEATURES

- Low profile boots for higher density blade connectivity
- Designed to have a repeatable, controlled and consistent assembly ensuring optimum performance
- Flexible and robust construction
- LSHF/LSZH materials as standard
- Performance assessed through rigorous quality control in compliance with the demands of industry standards
- Available in a variety of lengths and colors
- Factory made and tested 24-gauge patch cords offer guaranteed quality and optimum performance



ORDER INFO

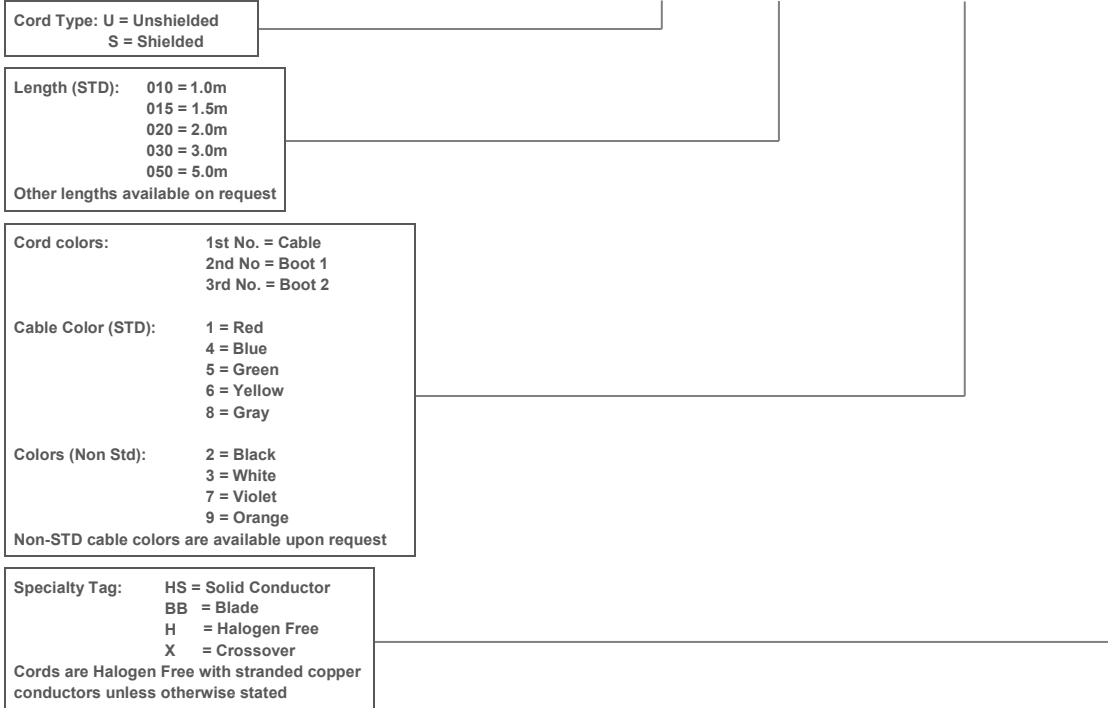
| Part Number | Item Description | Color | Qty per Pack |
|-----------------|----------------------------------|---------|--------------|
| C6CPCU010-XXXBB | Cat6Plus U/UTP Patch Cord – 1.0m | Various | 1 |
| C6CPCU015-XXXBB | Cat6Plus U/UTP Patch Cord – 1.5m | Various | 1 |
| C6CPCU020-XXXBB | Cat6Plus U/UTP Patch Cord – 2.0m | Various | 1 |
| C6CPCU030-XXXBB | Cat6Plus U/UTP Patch Cord – 3.0m | Various | 1 |
| C6CPCU050-XXXBB | Cat6Plus U/UTP Patch Cord – 5.0m | Various | 1 |

x = Standard range of colors = Red (111), Blue (444), Green (555), Yellow (666) and Gray (888)

Note: Non-standard colors, lengths and configurations available on request

PART NUMBER BREAKDOWN

C6CPCUaaa-bbbccc



PACKAGING

- Individually packed in branded easy-tear bags
- Individual bagged parts, bulk packed in bags of 10 for standard cord

TYPICAL APPLICATIONS

- Wall and Multi User Outlets
- Patch Panel and CPs
- Suitable to connection to servers, blade servers, hubs, switches etc.

ENVIROMENTAL CONDITIONS

- Operating temperature from 0°C to 50°C at 93% relative humidity, non-condensing
- Storage temperature from -20°C to 70°C

DIMENSIONS

- Length Tolerance (bracketed length) $\pm 1\%$
- Stranded 24AWG UTP nominal diameter 5.8mm

CONFORMANCE

- ISO 11801:2002 - Information Technology Generic Cabling for Customer Premises
- ANSI/EIA/TIA-568D - Commercial Building Telecommunications Cabling Standard
- ISO EN50173-1:2002 - Information Technology Generic Cabling systems
- IEC 61935-2 - Generic Cabling Systems: Specification for testing of Balanced Communication cabling in accordance with ISO11801: Patch Cord and Work Area Cords

*“Leviton is **dedicated** to **designing, developing, and manufacturing** sustainable **high performance** structured cabling and specialty **cabling solutions.**”*

The information contained in this document is valid and correct at the time of issue. Leviton reserves the right to modify details without notice in light of subsequent standard/specification changes and ongoing technical developments.